



2121 Laurier Pkwy, Windsor, ON N9J 0B4
Sitewise

Study Areas

2121 Laurier Pkwy, Windsor, ON N9J 0B4

Lat: 42.22241, Long: -83.05299

Maps

[2121 Laurier Pkwy, Windsor, ON N9J 0B4](#)

Profile Tables

[2025 Demographic Snapshot](#)

[2025 Estimates and Projections Population Trends](#)

[2025 Estimates and Projections Household Trends](#)

[2025 Estimates and Projections Population by Age and Sex Comparison](#)

[2025 Estimates and Projections Population by Age and Sex](#)

[2025 Estimates and Projections Household Maintainers](#)

[2025 Estimates and Projections Marital Status, Education, Labour Force](#)

[2025 Estimates and Projections Home Language](#)

[2025 Estimates and Projections Labour Force by Occupation](#)

[2025 Estimates and Projections Labour Force by Industry](#)

[2025 Estimates and Projections Mode of Transportation To Work](#)

[2025 Estimates and Projections Income Trends](#)

[2025 Estimates and Projections Households and Dwellings](#)

[2025 Estimates and Projections Census Family Structure and Children](#)

[2025 Estimates and Projections Citizenship Status](#)

[2025 Estimates and Projections Immigrant Status and Selected Places of Birth](#)

[2025 Estimates and Projections Generation Status](#)

[2025 Estimates and Projections Mobility Status 5 Years Ago](#)

[2025 Estimates and Projections Visible Minority Population](#)

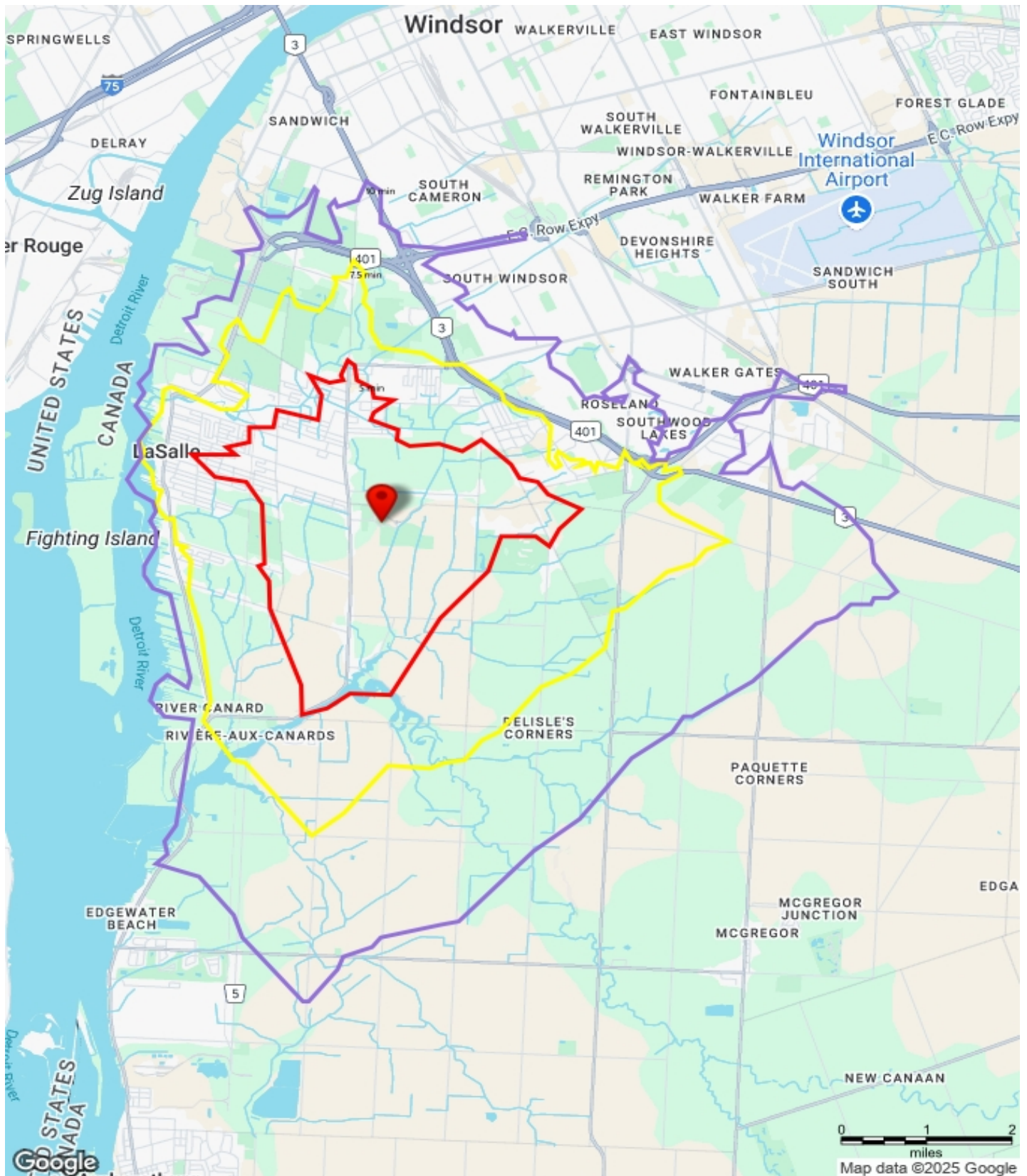
[2025 Estimates and Projections Selected Ethnic Origins Population](#)

[2025 Estimates and Projections Knowledge of Official Language](#)

Prepared on: 6/5/2025 3:07:42 PM



2121 Laurier Pkwy, Windsor, ON N9J 0B4





2121 Laurier Pkwy, Windsor, ON N9J 0B4
Sitewise
2025 Demographic Snapshot

2025 Demographic Snapshot	2121 Laurier Pkwy, Windsor, ON N9J 0B4 0-5 min		2121 Laurier Pkwy, Windsor, ON N9J 0B4 0-7.5 min		2121 Laurier Pkwy, Windsor, ON N9J 0B4 0-10 min	
		%		%		%
2021 Census*	10,002		32,910		49,961	
2025 Population estimate	11,115		36,372		54,676	
2028 Population projection	11,717		38,236		56,802	
% Population Change (2021-25)	11.1%		10.5%		9.4%	
% Population Change (2025-28)	5.4%		5.1%		3.9%	
2025 Population by Age	11,115		36,372		54,676	
0 to 4 years	467	4%	1,569	4%	2,282	4%
5 to 19 years	1,956	18%	6,431	18%	9,157	17%
20 to 24 years	844	8%	2,800	8%	4,421	8%
25 to 34 years	1,391	13%	4,729	13%	7,544	14%
35 to 44 years	1,156	10%	4,135	11%	5,926	11%
45 to 54 years	1,489	13%	4,764	13%	6,846	13%
55 to 64 years	1,530	14%	5,044	14%	7,497	14%
65 to 74 years	1,216	11%	3,865	11%	5,922	11%
75 to 84 years	771	7%	2,266	6%	3,610	7%
85 years and over	295	3%	768	2%	1,473	3%
Median Age	42.9		41.6		41.7	
2025 Census Families in Private Households	3,160		10,268		14,911	
Couple census families	2,823	89%	9,047	88%	13,016	87%
Without children	1,256	40%	3,806	37%	5,639	38%
With children	1,567	50%	5,240	51%	7,376	49%
One-parent families	337	11%	1,221	12%	1,895	13%
Average Persons Per Census Family	3.0		3.1		3.0	
Average Children Per Census Family	1.2		1.2		1.2	
2025 Households	3,967		12,471		18,380	
Persons per household	2.8		2.9		3.0	
Average household income	\$ 188,033		\$ 175,422		\$ 167,518	
Median estimated household income	\$ 129,676		\$ 125,143		\$ 119,229	
2025 Population 25 to 64 years by Educational Attainment	5,565		18,629		27,616	
No certificate, diploma or degree	153	3%	579	3%	954	3%
Secondary (high) school diploma or equivalency certificate	1,011	18%	3,980	21%	6,102	22%
Postsecondary certificate, diploma, or degree	4,401	79%	14,070	76%	20,561	74%
Apprenticeship or trades certificate or diploma	353	6%	1,144	6%	1,669	6%
College, CEGEP or other non university certificate or diploma	1,306	23%	4,719	25%	6,792	25%
University certificate or diploma below bachelor level	92	2%	336	2%	486	2%
Bachelor's degree or higher	2,650	48%	7,871	42%	11,613	42%
Bachelor's degree	1,665	30%	5,039	27%	7,349	27%



2121 Laurier Pkwy, Windsor, ON N9J 0B4
Sitewise
2025 Demographic Snapshot

2025 Demographic Snapshot	2121 Laurier Pkwy, Windsor, ON N9J 0B4 0-5 min		2121 Laurier Pkwy, Windsor, ON N9J 0B4 0-7.5 min		2121 Laurier Pkwy, Windsor, ON N9J 0B4 0-10 min	
		%		%		%
University certificate, diploma or degree above bachelor level	131	2%	384	2%	606	2%
Degree in medicine, dentistry, veterinary medicine or optometry	129	2%	271	1%	371	1%
Master's Degree	573	10%	1,801	10%	2,712	10%
Earned Doctorate	152	3%	376	2%	576	2%
2025 Population by Marital Status (15 years+)	9,438		30,769		46,696	
Single	2,324	25%	7,736	25%	12,074	26%
Common-Law	449	5%	1,626	5%	2,445	5%
Married	5,583	59%	17,871	58%	26,373	56%
Divorced or Separated	553	6%	1,888	6%	2,950	6%
Widowed	529	6%	1,647	5%	2,853	6%
Top 3 Dominant Languages	English Mandarin Arabic		English Mandarin Arabic		English Mandarin Arabic	
<i>* Population counts have been adjusted by MapInfo for census undercounts.</i>						



2121 Laurier Pkwy, Windsor, ON N9J 0B4
Sitewise
2025 Estimates and Projections Population Trends

2025 Estimates and Projections Population Trends	2121 Laurier Pkwy, Windsor, ON N9J 0B4 0-5 min	2121 Laurier Pkwy, Windsor, ON N9J 0B4 0-7.5 min	2121 Laurier Pkwy, Windsor, ON N9J 0B4 0-10 min
Total Population			
2021 Census*	10,002	32,910	49,961
2025 Estimated	11,115	36,372	54,676
2028 projected	11,717	38,236	56,802
2030 projected	12,099	39,422	58,243
2035 projected	13,034	42,289	61,598
Change in Population (persons)			
2021 to 2025	1,113	3,461	4,715
2025 to 2028	602	1,864	2,126
2028 to 2030	382	1,186	1,441
2030 to 2035	934	2,867	3,355
Change in Population (percent)			
2021 to 2025	11.1%	10.5%	9.4%
2025 to 2028	5.4%	5.1%	3.9%
2028 to 2030	3.3%	3.1%	2.5%
2030 to 2035	7.7%	7.3%	5.8%
Rate of Change in Population (percent per year)			
2021 to 2025	2.8%	2.6%	2.4%
2025 to 2028	1.8%	1.7%	1.3%
2028 to 2030	1.6%	1.6%	1.3%
2030 to 2035	1.5%	1.5%	1.2%
<i>* Population counts have been adjusted by MapInfo for census undercounts.</i>			



2121 Laurier Pkwy, Windsor, ON N9J 0B4
Sitewise
2025 Estimates and Projections Household Trends

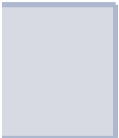
2025 Estimates and Projections Household Trends	2121 Laurier Pkwy, Windsor, ON N9J 0B4 0-5 min	2121 Laurier Pkwy, Windsor, ON N9J 0B4 0-7.5 min	2121 Laurier Pkwy, Windsor, ON N9J 0B4 0-10 min
Total Households			
2021 Census*	3,586	11,358	17,177
2025 Estimated	3,967	12,471	18,380
2028 projected	4,208	13,197	19,310
2030 projected	4,328	13,551	19,700
2035 projected	4,586	14,309	20,656
Change in Households			
2021 to 2025	381	1,113	1,203
2025 to 2028	241	726	930
2028 to 2030	121	354	390
2030 to 2035	258	758	956
Change in Households (percent)			
2021 to 2025	10.6%	9.8%	7.0%
2025 to 2028	6.1%	5.8%	5.1%
2028 to 2030	2.9%	2.7%	2.0%
2030 to 2035	5.6%	5.3%	4.6%
Rate of Change in Households (percent per year)			
2021 to 2025	2.7%	2.4%	1.8%
2025 to 2028	2.0%	1.9%	1.7%
2025 to 2030	1.4%	1.3%	1.0%
2030 to 2035	1.1%	1.1%	0.9%
* Household counts have been adjusted by MapInfo for census undercounts.			



2025 Estimates and Projections Population by Age and Sex Comparison	2121 Laurier Pkwy, Windsor, ON N9J 0B4 0-5 min						Total Population
	Total Population		Men+		Women+		
2025 Estimated Population	11,115	% base	5,509	% base	5,606	% base	36,372
0 to 4 years	467	4%	243	4%	224	4%	1,569
5 to 9 years	560	5%	302	5%	259	5%	1,883
10 to 14 years	650	6%	328	6%	321	6%	2,151
15 to 19 years	747	7%	378	7%	369	7%	2,397
20 to 24 years	844	8%	439	8%	405	7%	2,800
25 to 29 years	806	7%	443	8%	363	6%	2,706
30 to 34 years	584	5%	298	5%	287	5%	2,023
35 to 39 years	547	5%	261	5%	286	5%	1,969
40 to 44 years	609	5%	281	5%	328	6%	2,166
45 to 49 years	708	6%	355	6%	353	6%	2,271
50 to 54 years	781	7%	388	7%	393	7%	2,494
55 to 59 years	751	7%	367	7%	383	7%	2,497
60 to 64 years	779	7%	384	7%	395	7%	2,547
65 to 69 years	669	6%	333	6%	336	6%	2,151
70 to 74 years	547	5%	250	5%	297	5%	1,714
75 to 79 years	462	4%	212	4%	250	4%	1,394
80 to 84 years	308	3%	134	2%	175	3%	872
85 years and over	295	3%	113	2%	182	3%	768
Median Age	42.9		41.1		44.4		41.6
Dominant Age Group	20 to 24		25 to 29		20 to 24		20 to 24

2121 Laurier Pkwy, Windsor, ON N9J 0B4
Sitewise
Population by Age and Sex Comparison

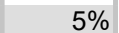
2121 Laurier Pkwy, Windsor, ON N9J 0B4 0-7.5 min					2121 Laurier Pkwy, Windsor, ON N9J 0B4 0-10 min				
	Men+		Women+		Total Population		Men+		Women+
% base	18,273	% base	18,099	% base	54,676	% base	27,385	% base	27,291
4%	795	4%	775	4%	2,282	4%	1,148	4%	1,134
5%	984	5%	899	5%	2,656	5%	1,364	5%	1,292
6%	1,096	6%	1,055	6%	3,042	6%	1,546	6%	1,496
7%	1,232	7%	1,165	6%	3,459	6%	1,779	6%	1,680
8%	1,512	8%	1,288	7%	4,421	8%	2,398	9%	2,022
7%	1,502	8%	1,204	7%	4,404	8%	2,466	9%	1,937
6%	1,067	6%	956	5%	3,140	6%	1,690	6%	1,450
5%	989	5%	980	5%	2,863	5%	1,446	5%	1,417
6%	1,057	6%	1,109	6%	3,063	6%	1,494	5%	1,569
6%	1,107	6%	1,164	6%	3,202	6%	1,540	6%	1,662
7%	1,205	7%	1,289	7%	3,643	7%	1,756	6%	1,887
7%	1,231	7%	1,266	7%	3,708	7%	1,835	7%	1,873
7%	1,265	7%	1,282	7%	3,788	7%	1,884	7%	1,904
6%	1,078	6%	1,073	6%	3,293	6%	1,631	6%	1,662
5%	801	4%	913	5%	2,629	5%	1,211	4%	1,417
4%	652	4%	742	4%	2,177	4%	1,006	4%	1,171
2%	405	2%	467	3%	1,432	3%	664	2%	768
2%	295	2%	474	3%	1,473	3%	526	2%	947
	39.8		43.3		41.7		39.5		43.9
	20 to 24		50 to 54		20 to 24		25 to 29		20 to 24



% base



4%



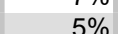
5%



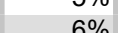
5%



6%



7%



7%



5%



5%



6%



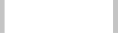
6%



7%



7%



7%



6%



5%



4%



3%



3%





2121 Laurier Pkwy, Windsor, ON N9J 0B4
Sitewise
2025 Estimates and Projections Population by Age and Sex

2025 Estimates and Projections Population by Age and Sex	2121 Laurier Pkwy, Windsor, ON N9J 0B4 0-5 min		2121 Laurier Pkwy, Windsor, ON N9J 0B4 0-7.5 min		2121 Laurier Pkwy, Windsor, ON N9J 0B4 0-10 min	
		%		%		%
2025 Estimated Population	11,115	% base	36,372	% base	54,676	% base
0 to 4 years	467	4%	1,569	4%	2,282	4%
5 to 9 years	560	5%	1,883	5%	2,656	5%
10 to 14 years	650	6%	2,151	6%	3,042	6%
15 to 19 years	747	7%	2,397	7%	3,459	6%
20 to 24 years	844	8%	2,800	8%	4,421	8%
25 to 29 years	806	7%	2,706	7%	4,404	8%
30 to 34 years	584	5%	2,023	6%	3,140	6%
35 to 39 years	547	5%	1,969	5%	2,863	5%
40 to 44 years	609	5%	2,166	6%	3,063	6%
45 to 49 years	708	6%	2,271	6%	3,202	6%
50 to 54 years	781	7%	2,494	7%	3,643	7%
55 to 59 years	751	7%	2,497	7%	3,708	7%
60 to 64 years	779	7%	2,547	7%	3,788	7%
65 to 69 years	669	6%	2,151	6%	3,293	6%
70 to 74 years	547	5%	1,714	5%	2,629	5%
75 to 79 years	462	4%	1,394	4%	2,177	4%
80 to 84 years	308	3%	872	2%	1,432	3%
85 years and over	295	3%	768	2%	1,473	3%
Median Age	42.9		41.6		41.7	
Dominant Age Group	20 to 24		20 to 24		20 to 24	



2121 Laurier Pkwy, Windsor, ON N9J 0B4
Sitewise
2025 Estimates and Projections Population by Age and Sex

2025 Estimates and Projections Population by Age and Sex	2121 Laurier Pkwy, Windsor, ON N9J 0B4 0-5 min		2121 Laurier Pkwy, Windsor, ON N9J 0B4 0-7.5 min		2121 Laurier Pkwy, Windsor, ON N9J 0B4 0-10 min	
		%		%		%
2025 Estimated Men+ Population	5,509	% base	18,273	% base	27,385	% base
0 to 4 years	243	4%	795	4%	1,148	4%
5 to 9 years	302	5%	984	5%	1,364	5%
10 to 14 years	328	6%	1,096	6%	1,546	6%
15 to 19 years	378	7%	1,232	7%	1,779	6%
20 to 24 years	439	8%	1,512	8%	2,398	9%
25 to 29 years	443	8%	1,502	8%	2,466	9%
30 to 34 years	298	5%	1,067	6%	1,690	6%
35 to 39 years	261	5%	989	5%	1,446	5%
40 to 44 years	281	5%	1,057	6%	1,494	5%
45 to 49 years	355	6%	1,107	6%	1,540	6%
50 to 54 years	388	7%	1,205	7%	1,756	6%
55 to 59 years	367	7%	1,231	7%	1,835	7%
60 to 64 years	384	7%	1,265	7%	1,884	7%
65 to 69 years	333	6%	1,078	6%	1,631	6%
70 to 74 years	250	5%	801	4%	1,211	4%
75 to 79 years	212	4%	652	4%	1,006	4%
80 to 84 years	134	2%	405	2%	664	2%
85 years and over	113	2%	295	2%	526	2%
Median Men+ Age	41.1		39.8		39.5	
Dominant Men+ Age Group	25 to 29		20 to 24		25 to 29	
2025 Estimated Women+ Population	5,606	% base	18,099	% base	27,291	% base
0 to 4 years	224	4%	775	4%	1,134	4%
5 to 9 years	259	5%	899	5%	1,292	5%
10 to 14 years	321	6%	1,055	6%	1,496	5%
15 to 19 years	369	7%	1,165	6%	1,680	6%
20 to 24 years	405	7%	1,288	7%	2,022	7%
25 to 29 years	363	6%	1,204	7%	1,937	7%
30 to 34 years	287	5%	956	5%	1,450	5%
35 to 39 years	286	5%	980	5%	1,417	5%
40 to 44 years	328	6%	1,109	6%	1,569	6%
45 to 49 years	353	6%	1,164	6%	1,662	6%
50 to 54 years	393	7%	1,289	7%	1,887	7%
55 to 59 years	383	7%	1,266	7%	1,873	7%
60 to 64 years	395	7%	1,282	7%	1,904	7%
65 to 69 years	336	6%	1,073	6%	1,662	6%
70 to 74 years	297	5%	913	5%	1,417	5%
75 to 79 years	250	4%	742	4%	1,171	4%



2121 Laurier Pkwy, Windsor, ON N9J 0B4
Sitewise
2025 Estimates and Projections Population by Age and Sex

2025 Estimates and Projections Population by Age and Sex	2121 Laurier Pkwy, Windsor, ON N9J 0B4 0-5 min		2121 Laurier Pkwy, Windsor, ON N9J 0B4 0-7.5 min		2121 Laurier Pkwy, Windsor, ON N9J 0B4 0-10 min	
		%		%		%
80 to 84 years	175	3%	467	3%	768	3%
85 years and over	182	3%	474	3%	947	3%
Median Women+ Age	44.4		43.3		43.9	
Dominant Women+ Age Group	20 to 24		50 to 54		20 to 24	



2121 Laurier Pkwy, Windsor, ON N9J 0B4
Sitewise
2025 Estimates and Projections Household Maintainers

2025 Estimates and Projections Household Maintainers	2121 Laurier Pkwy, Windsor, ON N9J 0B4 0-5 min		2121 Laurier Pkwy, Windsor, ON N9J 0B4 0-7.5 min		2121 Laurier Pkwy, Windsor, ON N9J 0B4 0-10 min	
2025 Total Household Maintainers	3,967	% base	12,471	% base	18,380	% base
Under 25 years	12	0%	37	0%	57	0%
25 to 34 years	333	8%	1,218	10%	1,842	10%
35 to 44 years	616	16%	1,919	15%	2,702	15%
45 to 54 years	816	21%	2,543	20%	3,541	19%
55 to 64 years	808	20%	2,708	22%	4,036	22%
65 to 74 years	666	17%	2,200	18%	3,256	18%
75 years and over	717	18%	1,846	15%	2,945	16%
2025 Census Families in Private Households	3,160	% base	10,268	% base	14,911	% base
Couple census families	2,823	89%	9,047	88%	13,016	87%
Without children	1,256	40%	3,806	37%	5,639	38%
With children	1,567	50%	5,240	51%	7,376	49%
Lone-parent families	337	11%	1,221	12%	1,895	13%
Average Persons Per Census Family	3.0		3.1		3.0	
Average Children Per Census Family	1.2		1.2		1.2	
2025 Households by Household Size	3,967	% base	12,471	% base	18,380	% base
1 person	744	19%	1,966	16%	2,911	16%
2 persons	1,214	31%	3,663	29%	5,434	30%
3 persons	650	16%	2,415	19%	3,404	19%
4 persons	815	21%	2,672	21%	3,697	20%
5 persons or more	544	14%	1,755	14%	2,934	16%



2121 Laurier Pkwy, Windsor, ON N9J 0B4

Sitewise

2025 Estimates and Projections Marital Status, Education, Labour Force

2025 Estimates and Projections Marital Status, Education, Labour Force	2121 Laurier Pkwy, Windsor, ON N9J 0B4 0-5 min		2121 Laurier Pkwy, Windsor, ON N9J 0B4 0-7.5 min		2121 Laurier Pkwy, Windsor, ON N9J 0B4 0-10 min	
		%		%		%
2025 Population 15 years and Over by Marital Status	9,438		30,769		46,696	
Single (never married)	2,324	25%	7,736	25%	12,074	26%
Married (not separated)]	5,583	59%	17,871	58%	26,373	56%
Common-law	449	5%	1,626	5%	2,445	5%
Widowed	529	6%	1,647	5%	2,853	6%
Divorced	410	4%	1,396	5%	2,145	5%
Separated (legally married)	143	2%	493	2%	805	2%
2025 Population 15 years and Over by Common-law Status	9,438		30,769		46,696	
Not in a common-law relationship	8,989	95%	29,143	95%	44,251	95%
In a common-law relationship	449	5%	1,626	5%	2,445	5%
2025 Population 25 to 64 years by Educational Attainment	5,565		18,629		27,616	
No certificate, diploma or degree	153	3%	579	3%	954	3%
Secondary (high) school diploma or equivalency certificate	1,011	18%	3,980	21%	6,102	22%
Postsecondary certificate, diploma, or degree	4,401	79%	14,070	76%	20,561	74%
Apprenticeship or trades certificate or diploma	353	6%	1,144	6%	1,669	6%
College, CEGEP or other non university certificate or diploma	1,306	23%	4,719	25%	6,792	25%
University certificate or diploma below bachelor level	92	2%	336	2%	486	2%
Bachelor's degree or higher	2,650	48%	7,871	42%	11,613	42%
Bachelor's degree	1,665	30%	5,039	27%	7,349	27%
University certificate, diploma or degree above bachelor level	131	2%	384	2%	606	2%
Degree in medicine, dentistry, veterinary medicine or optometry	129	2%	271	1%	371	1%
Master's Degree	573	10%	1,801	10%	2,712	10%
Earned Doctorate	152	3%	376	2%	576	2%
2025 Population 15 years and over by Labour Force Activity	9,426		30,543		45,815	
In the labour force	5,652	60%	18,808	62%	27,613	60%
Not in the labour force	3,773	40%	11,735	38%	18,202	40%
Participation Rate	60.0%		61.6%		60.3%	
2025 Men+ 15 years and over by Labour Force Activity	4,630		15,337		23,039	
In the labour force	3,024	65%	10,104	66%	15,073	65%
Not in the labour force	1,606	35%	5,233	34%	7,965	35%



2121 Laurier Pkwy, Windsor, ON N9J 0B4

Sitewise

2025 Estimates and Projections Marital Status, Education, Labour Force

2025 Estimates and Projections Marital Status, Education, Labour Force	2121 Laurier Pkwy, Windsor, ON N9J 0B4 0-5 min		2121 Laurier Pkwy, Windsor, ON N9J 0B4 0-7.5 min		2121 Laurier Pkwy, Windsor, ON N9J 0B4 0-10 min	
		%		%		%
Participation Rate	65.3%		65.9%		65.4%	
2025 Women+ 15 years and over by Labour Force Activity	4,796		15,206		22,776	
In the labour force	2,628	55%	8,704	57%	12,540	55%
Not in the labour force	2,168	45%	6,502	43%	10,236	45%
Participation Rate	54.8%		57.2%		55.1%	



2121 Laurier Pkwy, Windsor, ON N9J 0B4
Sitewise
2025 Estimates and Projections Home Language

2025 Estimates and Projections Home Language	2121 Laurier Pkwy, Windsor, ON N9J 0B4 0-5 min		2121 Laurier Pkwy, Windsor, ON N9J 0B4 0-7.5 min		2121 Laurier Pkwy, Windsor, ON N9J 0B4 0-10 min	
		%		%		%
2025 Population by Home Language	11,125		36,064		53,537	
Single Responses	10,797	97%	34,947	97%	51,582	96%
Official languages	10,178	91%	32,565	90%	46,950	88%
English	10,152	91%	32,455	90%	46,818	87%
French	26	0%	110	0%	133	0%
Non-official languages	619	6%	2,382	7%	4,631	9%
Arabic	107	1%	461	1%	974	2%
Vietnamese	18	0%	31	0%	63	0%
Tagalog (Pilipino, Filipino)	0	0%	11	0%	44	0%
Malayam	0	0%	10	0%	11	0%
Tamil	5	0%	41	0%	60	0%
Polish	26	0%	47	0%	87	0%
Russian	13	0%	14	0%	18	0%
Serbian	22	0%	43	0%	65	0%
Ukrainian	0	0%	0	0%	0	0%
German	0	0%	1	0%	3	0%
Greek	0	0%	26	0%	39	0%
Bengali	0	0%	0	0%	12	0%
Gujarati	31	0%	88	0%	110	0%
Hindi	0	0%	38	0%	62	0%
Punjabi (Panjabi)	60	1%	295	1%	437	1%
Urdu	21	0%	136	0%	315	1%
Dari	3	0%	7	0%	7	0%
Iranian Persian	14	0%	53	0%	103	0%
Italian	65	1%	222	1%	368	1%
Portuguese	0	0%	12	0%	12	0%
Romanian	0	0%	42	0%	66	0%
Spanish	17	0%	59	0%	104	0%
Korean	25	0%	80	0%	130	0%
Mandarin	158	1%	473	1%	1,160	2%
Yue (Cantonese)	15	0%	64	0%	183	0%
Turkish	0	0%	6	0%	11	0%
Other Non-Indigenous Languages	20	0%	122	0%	188	0%
Indigenous Languages	0	0%	0	0%	0	0%
Multiple Responses	329	3%	1,117	3%	1,955	4%



2121 Laurier Pkwy, Windsor, ON N9J 0B4

Sitewise

2025 Estimates and Projections Labour Force by Occupation

2025 Estimates and Projections Labour Force by Occupation	2121 Laurier Pkwy, Windsor, ON N9J 0B4 0-5 min		2121 Laurier Pkwy, Windsor, ON N9J 0B4 0-7.5 min		2121 Laurier Pkwy, Windsor, ON N9J 0B4 0-10 min	
		%		%		%
2025 Labour Force by Occupation	5,652		18,808		27,613	
Legislative and senior management	81	1%	190	1%	232	1%
Business, finance & administrative	913	16%	2,905	15%	4,187	15%
Natural and applied sciences and related	609	11%	2,179	12%	3,105	11%
Health	672	12%	2,128	11%	2,988	11%
Education, law and social, community and government services	874	15%	2,543	14%	3,801	14%
Art, culture, recreation and sport	98	2%	308	2%	367	1%
Sales and service	1,193	21%	3,974	21%	6,036	22%
Trades, transport and equipment operators and related	735	13%	2,710	14%	4,039	15%
Natural resources, agriculture and related production	41	1%	204	1%	295	1%
Manufacturing and utilities	392	7%	1,428	8%	2,149	8%
Occupation - Not applicable	45	1%	238	1%	415	2%
2024 Men+ Labour Force by Occupation	3,024		10,104		15,073	
Legislative and senior management	40	1%	120	1%	162	1%
Business, finance & administrative	286	9%	859	9%	1,243	8%
Natural and applied sciences and related	516	17%	1,848	18%	2,662	18%
Health	159	5%	421	4%	611	4%
Social science, education, government and religion	332	11%	900	9%	1,332	9%
Art, culture, recreation and sport	54	2%	158	2%	181	1%
Sales and service	574	19%	1,785	18%	2,856	19%
Trades, transport and equipment operators and related	715	24%	2,621	26%	3,906	26%
Natural resources, agriculture and related production	41	1%	184	2%	273	2%
Manufacturing and utilities	307	10%	1,122	11%	1,689	11%
Occupation - Not applicable	0	0%	86	1%	159	1%
2024 Women+ Labour Force by Occupation	2,628		8,704		12,540	
Legislative and senior management	41	2%	70	1%	70	1%
Business, finance & administrative	626	24%	2,046	24%	2,943	23%
Natural and applied sciences and related	92	4%	331	4%	443	4%
Health	513	20%	1,707	20%	2,377	19%
Education, law and social, community and government services	542	21%	1,643	19%	2,469	20%
Art, culture, recreation and sport	45	2%	150	2%	187	1%
Sales and service	618	24%	2,190	25%	3,180	25%



2121 Laurier Pkwy, Windsor, ON N9J 0B4

Sitewise

2025 Estimates and Projections Labour Force by Occupation

2025 Estimates and Projections Labour Force by Occupation	2121 Laurier Pkwy, Windsor, ON N9J 0B4 0-5 min		2121 Laurier Pkwy, Windsor, ON N9J 0B4 0-7.5 min		2121 Laurier Pkwy, Windsor, ON N9J 0B4 0-10 min	
		%		%		%
Trades, transport and equipment operators and related	20	1%	89	1%	134	1%
Natural resources, agriculture and related production	0	0%	20	0%	22	0%
Manufacturing and utilities	85	3%	306	4%	460	4%
Occupation - Not applicable	45	2%	152	2%	256	2%



2121 Laurier Pkwy, Windsor, ON N9J 0B4
Sitewise
2025 Estimates and Projections Labour Force by Industry

2025 Estimates and Projections Labour Force by Industry	2121 Laurier Pkwy, Windsor, ON N9J 0B4 0-5 min		2121 Laurier Pkwy, Windsor, ON N9J 0B4 0-7.5 min		2121 Laurier Pkwy, Windsor, ON N9J 0B4 0-10 min	
		%		%		%
2025 Labour Force by Industry	5,652		18,808		27,613	
Aggricuture, forestry, fishing and hunting	41	1%	114	1%	169	1%
Mining, quarrying, and oil and gas extraction	0	0%	28	0%	29	0%
Utilities	7	0%	27	0%	55	0%
Construction	311	6%	993	5%	1,518	5%
Manufacturing	1,213	21%	4,035	21%	5,888	21%
Wholesale Trade	71	1%	312	2%	391	1%
Retail Trade	533	9%	1,841	10%	2,802	10%
Transportation and warehousing	209	4%	635	3%	1,022	4%
Information and cultural industries	12	0%	12	0%	18	0%
Finance and Insurance	161	3%	681	4%	983	4%
Real estate and rental and leasing	31	1%	147	1%	286	1%
Professional, scientific, and technical services	495	9%	1,462	8%	2,089	8%
Management of companies and enterprises	0	0%	0	0%	0	0%
Administrative and support, waste management and remediation services	138	2%	545	3%	838	3%
Educational Services	679	12%	2,088	11%	3,086	11%
Health care and social assistance	942	17%	2,977	16%	4,344	16%
Arts, entertainment and recreation	54	1%	278	1%	325	1%
Accommodation and food services	231	4%	1,000	5%	1,486	5%
Other services (except public administration)	128	2%	444	2%	607	2%
Public administration	348	6%	941	5%	1,239	4%
Not applicable	48	1%	248	1%	441	2%
2025 Men+ Labour Force by Industry	3,024		10,104		15,073	
Aggricuture, forestry, fishing and hunting	33	1%	90	1%	142	1%
Mining, quarrying, and oil and gas extraction	0	0%	28	0%	29	0%
Utilities	7	0%	27	0%	55	0%
Construction	311	10%	964	10%	1,437	10%
Manufacturing	926	31%	3,242	32%	4,744	31%
Wholesale Trade	63	2%	239	2%	302	2%
Retail Trade	247	8%	843	8%	1,338	9%
Transportation and warehousing	150	5%	452	4%	782	5%
Information and cultural industries	12	0%	12	0%	12	0%
Finance and Insurance	97	3%	301	3%	452	3%
Real estate and rental and leasing	15	0%	61	1%	164	1%
Professional, scientific, and technical services	295	10%	916	9%	1,279	8%



2121 Laurier Pkwy, Windsor, ON N9J 0B4

Sitewise

2025 Estimates and Projections Labour Force by Industry

2025 Estimates and Projections Labour Force by Industry	2121 Laurier Pkwy, Windsor, ON N9J 0B4 0-5 min		2121 Laurier Pkwy, Windsor, ON N9J 0B4 0-7.5 min		2121 Laurier Pkwy, Windsor, ON N9J 0B4 0-10 min	
		%		%		%
Management of companies and enterprises	0	0%	0	0%	0	0%
Administrative and support, waste management and remediation services	65	2%	292	3%	497	3%
Educational Services	196	6%	565	6%	849	6%
Health care and social assistance	188	6%	516	5%	805	5%
Arts, entertainment and recreation	20	1%	187	2%	229	2%
Accommodation and food services	118	4%	456	5%	704	5%
Other services (except public administration)	53	2%	237	2%	307	2%
Public administration	228	8%	588	6%	776	5%
Not applicable	0	0%	88	1%	168	1%
2025 Women+ Labour Force by Industry	2,628		8,704		12,540	
Aggriculture, forestry, fishing and hunting	8	0%	24	0%	26	0%
Mining, quarrying, and oil and gas extraction	0	0%	0	0%	0	0%
Utilities	0	0%	0	0%	0	0%
Construction	0	0%	29	0%	80	1%
Manufacturing	286	11%	793	9%	1,144	9%
Wholesale Trade	8	0%	73	1%	89	1%
Retail Trade	286	11%	998	11%	1,464	12%
Transportation and warehousing	58	2%	184	2%	240	2%
Information and cultural industries	0	0%	0	0%	6	0%
Finance and Insurance	64	2%	380	4%	531	4%
Real estate and rental and leasing	17	1%	86	1%	121	1%
Professional, scientific, and technical services	201	8%	546	6%	810	6%
Management of companies and enterprises	0	0%	0	0%	0	0%
Administrative and support, waste management and remediation services	74	3%	253	3%	340	3%
Educational Services	482	18%	1,523	17%	2,237	18%
Health care and social assistance	754	29%	2,461	28%	3,538	28%
Arts, entertainment and recreation	34	1%	91	1%	95	1%
Accommodation and food services	112	4%	544	6%	782	6%
Other services (except public administration)	75	3%	207	2%	300	2%
Public administration	120	5%	353	4%	462	4%
Not applicable	48	2%	160	2%	273	2%



2121 Laurier Pkwy, Windsor, ON N9J 0B4
Sitewise
2025 Estimates and Projections Mode of Transportation To Work

2025 Estimates and Projections Mode of Transportation To Work	2121 Laurier Pkwy, Windsor, ON N9J 0B4 0-5 min		2121 Laurier Pkwy, Windsor, ON N9J 0B4 0-7.5 min		2121 Laurier Pkwy, Windsor, ON N9J 0B4 0-10 min	
		%		%		%
Total Employed Population Aged 15 Years and Over With a Usual Place of Work	3,641		12,204		17,752	
Car, Truck, or Van - As a Driver	3,399	93%	11,430	94%	16,494	93%
Car, Truck, or Van - As a Passenger	150	4%	549	4%	885	5%
Public Transit	0	0%	0	0%	19	0%
Walked	63	2%	97	1%	160	1%
Bicycle	8	0%	21	0%	21	0%
Other Methods	22	1%	107	1%	173	1%



2121 Laurier Pkwy, Windsor, ON N9J 0B4
Sitewise
2025 Estimates and Projections Income Trends

2025 Estimates and Projections Income Trends	2121 Laurier Pkwy, Windsor, ON N9J 0B4 0-5 min		2121 Laurier Pkwy, Windsor, ON N9J 0B4 0-7.5 min		2121 Laurier Pkwy, Windsor, ON N9J 0B4 0-10 min	
Average household income						
2025 Estimated	\$	188,033	\$	175,422	\$	167,518
2028 projected	\$	200,680	\$	187,505	\$	179,109
2030 projected	\$	209,099	\$	195,575	\$	186,884
Aggregate household income (\$000)						
2025 Estimated	\$	745,903	\$	2,187,693	\$	3,078,946
2028 projected	\$	844,398	\$	2,474,573	\$	3,458,585
2030 projected	\$	905,027	\$	2,650,256	\$	3,681,669
Change in average household income						
2025 to 2028	\$	12,647	\$	12,083	\$	11,591
2028 to 2030	\$	8,419	\$	8,070	\$	7,775
Change in aggregate household income (\$000)						
2025 to 2028	\$	98,494	\$	286,880	\$	379,638
2028 to 2030	\$	60,630	\$	175,683	\$	223,084
2025 Estimated Households by Income	3,967	% base	12,471	% base	18,380	% base
Under \$5,000	5	0%	16	0%	32	0%
\$5,000 to 9,999	0	0%	7	0%	10	0%
\$10,000 to 14,999	2	0%	13	0%	31	0%
\$15,000 to 19,999	12	0%	23	0%	41	0%
\$20,000 to 24,999	32	1%	74	1%	141	1%
\$25,000 to 29,999	46	1%	118	1%	212	1%
\$30,000 - 34,999	61	2%	149	1%	240	1%
\$35,000 - 39,999	62	2%	186	1%	323	2%
\$40,000 - 44,999	71	2%	233	2%	374	2%
\$45,000 - 49,999	93	2%	302	2%	506	3%
\$50,000 to 59,999	202	5%	671	5%	1,011	5%
\$60,000 - 69,999	199	5%	644	5%	1,019	6%
\$70,000 - 79,999	227	6%	675	5%	1,072	6%
\$80,000 - 89,999	214	5%	699	6%	1,119	6%
\$90,000 - 99,999	262	7%	889	7%	1,314	7%
\$100,000 - 124,999	408	10%	1,526	12%	2,270	12%
\$125,000 - 149,999	474	12%	1,589	13%	2,310	13%
\$150,000 - 199,999	806	20%	2,570	21%	3,541	19%
\$200,000 and over	792	20%	2,086	17%	2,815	15%



2121 Laurier Pkwy, Windsor, ON N9J 0B4
Sitewise
2025 Estimates and Projections Income Trends

2025 Estimates and Projections Income Trends	2121 Laurier Pkwy, Windsor, ON N9J 0B4 0-5 min	2121 Laurier Pkwy, Windsor, ON N9J 0B4 0-7.5 min	2121 Laurier Pkwy, Windsor, ON N9J 0B4 0-10 min
Median Estimated Household Income	\$ 129,676	\$ 125,143	\$ 119,229



2121 Laurier Pkwy, Windsor, ON N9J 0B4

Sitewise

2025 Estimates and Projections Households and Dwellings

2025 Estimates and Projections Households and Dwellings	2121 Laurier Pkwy, Windsor, ON N9J 0B4 0-5 min		2121 Laurier Pkwy, Windsor, ON N9J 0B4 0-7.5 min		2121 Laurier Pkwy, Windsor, ON N9J 0B4 0-10 min	
		%		%		%
2025 Households by Size of Household	3,967		12,471		18,380	
1 person	744	19%	1,966	16%	2,911	16%
2 persons	1,214	31%	3,663	29%	5,434	30%
3 persons	650	16%	2,415	19%	3,404	19%
4 persons	815	21%	2,672	21%	3,697	20%
5 or more persons	544	14%	1,755	14%	2,934	16%
Persons in Households	11,125		36,064		53,537	
Persons per household	2.80		2.89		2.91	
2025 Occupied Private Dwellings by Tenure	3,967		12,471		18,380	
Owner	3,581	90%	11,416	92%	16,653	91%
Renter	386	10%	1,055	8%	1,727	9%
Band housing	0	0%	0	0%	0	0%
2025 Occupied Private Dwellings by Structure Type	3,967		12,471		18,380	
Single-detached house	3,197	81%	10,402	83%	15,438	84%
Semi-detached house	129	3%	965	8%	1,266	7%
Row house	32	1%	285	2%	579	3%
Apartment; building that has fewer than five storeys	369	9%	544	4%	622	3%
Apartment; building that has five or more storeys	236	6%	236	2%	399	2%
Apartment; duplex	4	0%	28	0%	65	0%
Other single-attached house	0	0%	10	0%	10	0%
Movable dwelling	0	0%	0	0%	0	0%
2025 Households by Age of Maintainer	3,967		12,471		18,380	
Under 25 years	12	0%	37	0%	57	0%
25 to 34 years	333	8%	1,218	10%	1,842	10%
35 to 44 years	616	16%	1,919	15%	2,702	15%
45 to 54 years	816	21%	2,543	20%	3,541	19%
55 to 64 years	808	20%	2,708	22%	4,036	22%
65 to 74 years	666	17%	2,200	18%	3,256	18%
75 years and over	717	18%	1,846	15%	2,945	16%



2121 Laurier Pkwy, Windsor, ON N9J 0B4

Sitewise

2025 Estimates and Projections Census Family Structure and Children

2025 Estimates and Projections Census Family Structure and Children	2121 Laurier Pkwy, Windsor, ON N9J 0B4 0-5 min		2121 Laurier Pkwy, Windsor, ON N9J 0B4 0-7.5 min		2121 Laurier Pkwy, Windsor, ON N9J 0B4 0-10 min	
		%		%		%
2025 Census Families in Private Households	3,160		10,268		14,911	
Couple census families	2,823	89%	9,047	88%	13,016	87%
Without children	1,256	40%	3,806	37%	5,639	38%
With children	1,567	50%	5,240	51%	7,376	49%
One-parent families	337	11%	1,221	12%	1,895	13%
Average Persons Per Census Family	3.0		3.1		3.0	
Average Children Per Census Family	1.2		1.2		1.2	



2121 Laurier Pkwy, Windsor, ON N9J 0B4
Sitewise
2025 Estimates and Projections Citizenship Status

2025 Estimates and Projections Citizenship Status	2121 Laurier Pkwy, Windsor, ON N9J 0B4 0-5 min		2121 Laurier Pkwy, Windsor, ON N9J 0B4 0-7.5 min		2121 Laurier Pkwy, Windsor, ON N9J 0B4 0-10 min	
		%		%		%
2025 Total Population in Private Households by Citizenship Status	11,125		36,064		53,537	
Canadian citizens	10,663	96%	34,604	96%	50,837	95%
Aged under 18 years	2,232	20%	7,404	21%	10,430	19%
Aged 18 years and older	8,431	76%	27,201	75%	40,407	75%
Not Canadian citizens	462	4%	1,460	4%	2,701	5%



2121 Laurier Pkwy, Windsor, ON N9J 0B4

Sitewise

2025 Estimates and Projections Immigrant Status and Selected Places of Birth

2025 Estimates and Projections Immigrant Status and Selected Places of Birth	2121 Laurier Pkwy, Windsor, ON N9J 0B4 0-5 min		2121 Laurier Pkwy, Windsor, ON N9J 0B4 0-7.5 min		2121 Laurier Pkwy, Windsor, ON N9J 0B4 0-10 min	
		%		%		%
2025 Total Population in Private Households by Immigrant Status	11,125		36,064		53,537	
Non-immigrants	8,934	80%	28,613	79%	40,997	77%
Immigrants	2,174	20%	7,382	20%	12,276	23%
Americas	334	3%	1,083	3%	1,654	3%
Brazil	11	0%	28	0%	29	0%
Colombia	0	0%	2	0%	5	0%
El Salvador	0	0%	0	0%	0	0%
Guyana	0	0%	0	0%	0	0%
Haiti	0	0%	0	0%	0	0%
Jamaica	0	0%	2	0%	2	0%
Mexico	8	0%	13	0%	22	0%
Peru	0	0%	0	0%	0	0%
Trinidad and Tobago	0	0%	0	0%	0	0%
United States	315	3%	1,033	3%	1,531	3%
Other places of birth in Americas	0	0%	5	0%	65	0%
Europe	878	8%	2,593	7%	4,048	8%
Bosnia and Herzegovina	0	0%	14	0%	17	0%
Croatia	10	0%	87	0%	102	0%
United Kingdom	136	1%	551	2%	712	1%
France	7	0%	20	0%	20	0%
Germany	24	0%	76	0%	111	0%
Greece	5	0%	39	0%	85	0%
Hungary	29	0%	41	0%	67	0%
Italy	454	4%	1,193	3%	1,892	4%
Netherlands	0	0%	6	0%	23	0%
Poland	47	0%	213	1%	323	1%
Portugal	32	0%	37	0%	59	0%
Romania	28	0%	65	0%	156	0%
Russian Federation	0	0%	2	0%	2	0%
Serbia	32	0%	62	0%	150	0%
Ukraine	0	0%	0	0%	0	0%
Other places of birth in Europe	73	1%	187	1%	329	1%
Africa	141	1%	400	1%	537	1%
Algeria	0	0%	0	0%	0	0%
Congo, Democratic Republic of the	0	0%	0	0%	4	0%
Egypt	25	0%	30	0%	79	0%
Eritrea	0	0%	0	0%	0	0%
Ethiopia	0	0%	0	0%	7	0%
Morocco	0	0%	0	0%	0	0%
Nigeria	1	0%	6	0%	31	0%
Somalia	0	0%	0	0%	0	0%
South Africa, Republic of	46	0%	49	0%	51	0%
Other places of birth in Africa	68	1%	315	1%	365	1%
Asia	822	7%	3,306	9%	6,037	11%



2121 Laurier Pkwy, Windsor, ON N9J 0B4

Sitewise

2025 Estimates and Projections Immigrant Status and Selected Places of Birth

2025 Estimates and Projections Immigrant Status and Selected Places of Birth	2121 Laurier Pkwy, Windsor, ON N9J 0B4 0-5 min		2121 Laurier Pkwy, Windsor, ON N9J 0B4 0-7.5 min		2121 Laurier Pkwy, Windsor, ON N9J 0B4 0-10 min	
		%		%		%
Afghanistan	0	0%	0	0%	0	0%
Bangladesh	0	0%	0	0%	1	0%
China	247	2%	622	2%	1,487	3%
Hong Kong	28	0%	47	0%	112	0%
India	186	2%	974	3%	1,411	3%
Iran	16	0%	31	0%	57	0%
Iraq	7	0%	155	0%	343	1%
Korea, South	65	1%	126	0%	127	0%
Lebanon	68	1%	355	1%	659	1%
Pakistan	80	1%	304	1%	506	1%
Philippines	35	0%	94	0%	188	0%
Sri Lanka	3	0%	3	0%	3	0%
Syria	20	0%	45	0%	80	0%
Taiwan	0	0%	0	0%	18	0%
Turkey	0	0%	27	0%	28	0%
Viet Nam	14	0%	81	0%	145	0%
Other places of birth in Asia	54	0%	442	1%	872	2%
Oceania and other places of birth	0	0%	0	0%	0	0%
Non-permanent residents	17	0%	69	0%	263	0%
2025 Total Immigrants by Age at Immigration	2,174		7,382		12,276	
Under 5 years	196	9%	767	10%	1,266	10%
5 to 14 years	383	18%	1,538	21%	2,338	19%
15 to 24 years	519	24%	1,557	21%	2,442	20%
25 to 44 years	940	43%	3,004	41%	5,288	43%
45 years and over	136	6%	517	7%	942	8%



2121 Laurier Pkwy, Windsor, ON N9J 0B4
Sitewise
2025 Estimates and Projections Generation Status

2025 Estimates and Projections Generation Status	2121 Laurier Pkwy, Windsor, ON N9J 0B4 0-5 min		2121 Laurier Pkwy, Windsor, ON N9J 0B4 0-7.5 min		2121 Laurier Pkwy, Windsor, ON N9J 0B4 0-10 min	
		%		%		%
2025 Total Population in Private Households by Generation Status	11,125		36,064		53,537	
First generation	2,434	22%	8,199	23%	13,645	25%
Second generation	2,741	25%	8,616	24%	12,849	24%
Third generation or more	5,950	53%	19,249	53%	27,043	51%



2121 Laurier Pkwy, Windsor, ON N9J 0B4
Sitewise
2025 Estimates and Projections Mobility Status 5 Years Ago

2025 Estimates and Projections Mobility Status 5 Years Ago	2121 Laurier Pkwy, Windsor, ON N9J 0B4 0-5 min		2121 Laurier Pkwy, Windsor, ON N9J 0B4 0-7.5 min		2121 Laurier Pkwy, Windsor, ON N9J 0B4 0-10 min	
		%		%		%
2025 Population 5 years and over	10,476		34,388		51,670	
Movers	3,414	33%	10,959	32%	15,958	31%
Non-migrants	1,094	10%	3,244	9%	5,417	10%
Migrants	2,321	22%	7,715	22%	10,541	20%
Internal migrants	2,165	21%	6,929	20%	9,074	18%
Intraprovincial migrants	2,115	20%	6,738	20%	8,730	17%
Interprovincial migrants	50	0%	190	1%	344	1%
External migrants	156	1%	787	2%	1,466	3%
Non-movers	7,061	67%	23,429	68%	35,713	69%



2121 Laurier Pkwy, Windsor, ON N9J 0B4
Sitewise
2025 Estimates and Projections Visible Minority Population

2025 Estimates and Projections Visible Minority Population	2121 Laurier Pkwy, Windsor, ON N9J 0B4 0-5 min		2121 Laurier Pkwy, Windsor, ON N9J 0B4 0-7.5 min		2121 Laurier Pkwy, Windsor, ON N9J 0B4 0-10 min	
		%		%		%
2025 Total Population in Private Households by Visible Minority Groups	11,125		36,064		53,537	
Total Visible Minority Population	1,868	17%	6,741	19%	11,944	22%
South Asian	602	5%	2,276	6%	3,665	7%
Chinese	374	3%	1,253	3%	2,591	5%
Black	198	2%	497	1%	973	2%
Filipino	82	1%	292	1%	375	1%
Latin American	2	0%	64	0%	134	0%
Arab	462	4%	1,869	5%	3,232	6%
Southeast Asian	16	0%	169	0%	410	1%
West Asian	14	0%	36	0%	114	0%
Korean	51	0%	101	0%	107	0%
Japanese	0	0%	0	0%	0	0%
Visible minority, n.i.e.	0	0%	42	0%	60	0%
Multiple visible minorities	67	1%	140	0%	283	1%
Not a visible minority	9,258	83%	29,323	81%	41,593	78%



2121 Laurier Pkwy, Windsor, ON N9J 0B4

Sitewise

2025 Estimates and Projections Selected Ethnic Origins Population

2025 Estimates and Projections Selected Ethnic Origins Population	2121 Laurier Pkwy, Windsor, ON N9J 0B4 0-5 min		2121 Laurier Pkwy, Windsor, ON N9J 0B4 0-7.5 min		2121 Laurier Pkwy, Windsor, ON N9J 0B4 0-10 min	
		%		%		%
2025 Total Population in Private Households By Selected Ethnic Origins	11,125		36,064		53,537	
Indigenous ancestries	220	2%	930	3%	1,263	2%
Metis	64	1%	207	1%	264	0%
Canadian	1,511	14%	4,462	12%	6,469	12%
English	2,040	18%	6,598	18%	9,334	17%
Irish	1,461	13%	4,939	14%	7,248	14%
Scottish	1,315	12%	4,366	12%	6,243	12%
German	924	8%	3,085	9%	4,514	8%
Chinese	289	3%	936	3%	1,922	4%
Italian	2,165	19%	6,163	17%	8,364	16%
Indian (India)	290	3%	859	2%	1,235	2%
Ukrainian	286	3%	818	2%	1,239	2%
Dutch	286	3%	857	2%	1,200	2%
Polish	582	5%	1,638	5%	2,266	4%
Quebecois	0	0%	0	0%	12	0%
Filipino	70	1%	155	0%	222	0%
French Canadian	317	3%	922	3%	1,301	2%
Russian	50	0%	160	0%	296	1%
<i>* The sum of the ethnic groups in this table is greater than the population in private households because a person may report more than one ethnic origin.</i>						



2121 Laurier Pkwy, Windsor, ON N9J 0B4
Sitewise
2025 Estimates and Projections Knowledge of Official Language

2025 Estimates and Projections Knowledge of Official Language	2121 Laurier Pkwy, Windsor, ON N9J 0B4 0-5 min		2121 Laurier Pkwy, Windsor, ON N9J 0B4 0-7.5 min		2121 Laurier Pkwy, Windsor, ON N9J 0B4 0-10 min	
		%		%		%
2025 Total Population in Private Households by Knowledge of Official Languages	11,125		36,064		53,537	
English only	9,722	87%	31,510	87%	46,917	88%
French only	3	0%	7	0%	12	0%
English and French	1,315	12%	4,186	12%	5,916	11%
Neither English nor French	86	1%	361	1%	693	1%
Dominant Group	English only		English only		English only	
2021 total Population in Private Households by First Official Language Spoken	11,125		36,064		53,537	
English	10,820	97%	34,909	97%	51,644	96%
French	190	2%	648	2%	908	2%
English and French	33	0%	152	0%	302	1%
Neither English nor French	83	1%	355	1%	683	1%