



Historic Walkerville Albert Kahn Bank Receives Bold Makeover & Restoration

The former Canadian Bank of Commerce at 415 Devonshire Road in Walkerville, an iconic 1907 landmark designed by world-renowned architect **Albert Kahn**, has been fully restored and transformed. The 4,000-square-foot heritage building is now the new home of **Aalten Group**, a real estate development and private equity firm.

Aalten Group hired **Rosati** as construction manager, having worked with them on previous ventures and being familiar with their quality work in Walkerville. The partnership felt like a natural fit for bringing new life to the historic bank.

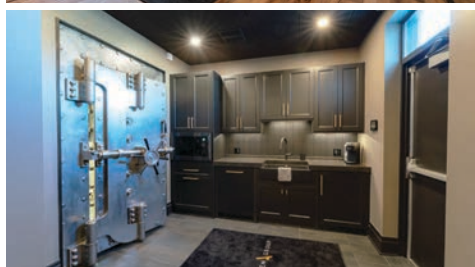
AALTEN GROUP



“It was a great experience and the collaboration with Rosati was seamless.”

- Colin McEachran, Aalten Group

The project included a full interior demolition, structural upgrades, and the installation of entirely new building systems. The result is another revitalized Walkerville landmark, restored for a new generation of businesses.



IN THIS ISSUE

PAGE 2

Rosati Delivers Precision Foundations As Minth's New Facility Hits 90% Complete Ahead Of Schedule

Sign Of The Times: Vizable Expands For Canada-Wide Growth

PAGE 3

Andritz Chooses Windsor To Open Advanced Die Plant For Feed & Biofuel Industries

Grand Central Begins Final Chapter With The Launch Of A 300,000 Sq. Ft. Industrial Flex Space

PAGE 4

Rosati Delivers Advanced Oral Surgery Centre For Central OMS

South Windsor's New Neighbourhood Butcher & Bakery Is Now Open & Ready To Meat You

Rosati Delivers Precision Foundations As Minth's New Facility Hits 90% Complete Ahead Of Schedule



Minth's new 380,000-square-foot facility is nearing completion, with construction progress now at approximately 90%. Work continues to advance on schedule as the facility confidently approaches its planned Q1 2026 completion date and milestone.

As part of the project, **Rosati** is delivering all specialized equipment and tooling foundations, including the most technically demanding components of the build. The foundation for **Minth's** new Extrusion Machine spans more than 300 feet in length and includes below-grade depths reaching up to 20 feet. This work required highly detailed engineering, soil stabilization measures, and precise construction execution.

Rosati has also completed the stamping press foundation, engineered to support three 200-ton presses and one 500-ton press, in addition to multiple machine foundations throughout the plant. **Rosati** is actively collaborating with the **Minth** Team on the planning, setup, rigging, and installation of new tooling and equipment, ensuring the facility is fully prepared for a smooth turnover and efficient operations upon completion.



Sign of the Times: Vizable Expands for Canada-Wide Growth

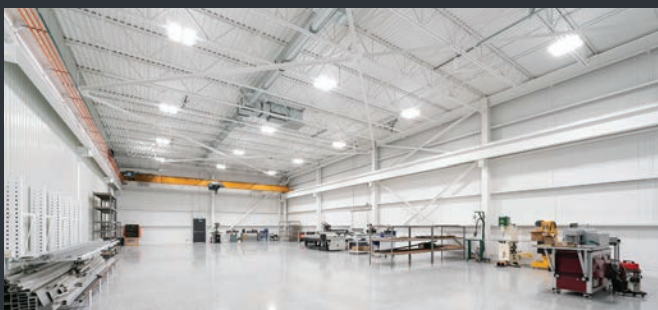
VIZABLE
IDENTIFICATION PRODUCTS

Locally owned Vizable Identification Products, at 5260 Burke Street in Oldcastle, is a growing signage and marketing company serving clients across Canada. Vizable produces a wide range of products, including pylon and wall signs, interior and site signage, as well as smaller items like window film and etching.

Rosati recently completed a state-of-the-art design-build expansion of **Vizable's** shop and fabrication area. The 9,650-square-foot, two-bay addition includes a five-ton crane system, providing more space for design, manufacturing, advanced equipment, and a larger team.

"Rosati worked closely with us to devise the best solution tailored to our operational needs. Their proactive approach and expertise made the process seamless from start to finish. Throughout the construction phase, Rosati has consistently anticipated our needs, ensuring each step was managed smoothly."

■ John Vizler, CMO, Vizable Identification Products



Andritz Chooses Windsor To Open Advanced Die Plant For Feed & Biofuel Industries



Andritz, a global leader in technology and services for the animal feed, aqua feed, pet food, and biofuel industries with over 280 sites in 80 countries, selected Rosati's Grand Central Business Park in Windsor, Ontario. With a central geographic location, this site supports customers on both sides of the border while strengthening Andritz's machining capabilities in North America.

Rosati completed the 71,065-square-foot plant, two-storey office, and all machine foundations, including two complex quad gundrill foundations, three lathe foundations, and two large oven foundations. Rosati worked closely with Andritz and the equipment manufacturers for the design of the foundations. include specialized waterproof concrete and a containment bladder installed below the foundation.

"Working with Rosati was a great decision, they have been good to us and easy to work with. The quality of the build is top notch. We had many complex leasehold additions which were required for our manufacturing process, and the Rosati team worked with us to ensure quality, precision and cost control. Rosati included our group in all aspects of the build, from groundbreaking through to occupancy."

■ Jay Derhak, General Manager of Andritz Feed & Biofuel



Grand Central Begins Final Chapter With The Launch Of A 300,000 Sq. Ft. Industrial Flex Space



Rosati is now construction-ready for a new 300,000-square-foot Industrial Flex Space on Dodge Drive. The building is available for lease, marking the final phase of Grand Central Business Park. This 17-acre development completes the park, which is already home to high-profile companies such as Amazon, Dainty Food, Andritz, GIBE and Stellantis.

Designed under M1.7 zoning, the large facility is adaptable for warehousing and/or manufacturing uses and can accommodate either a single tenant or multiple tenants. Available units range from 67,000 to 300,000 square feet.

The development offers a central, convenient location with easy access to major manufacturing hubs, including **Stellantis Windsor Assembly**, **NextStar Energy**, and **Ford Essex Engine Plant**, and is just minutes from all three border crossings.

Key features include:

- 44 loading docks
- 107 trailer spaces
- ESFR sprinkler system
- Large 63' x 65' bay sizes
- 32' interior clear height
- Over 400 employee parking spaces

For leasing inquiries please contact ROSATI at 519.734.6511.

Rosati Delivers Advanced Oral Surgery Centre For Central OMS

CENTRAL OMS
ORAL & MAXILLOFACIAL SURGERY

Rosati completed a full design-build for Central OMS, offices of Dr. Walker and Dr. Laschuk, trusted oral surgery specialists, now open and fully operational at 3475 North Service Road E. at Central Avenue. The facility is designed with patient care at its core, combining compassionate service, surgical expertise and cutting-edge technology.

The new 4,000-square-foot facility replaces a former office that was completely gutted down to the concrete floors, and rebuilt as a custom oral and maxillofacial surgery centre. The modern space includes six operating rooms, four recovery bays, built-in medical gas systems for general anaesthesia, a CT scanner, a dental laboratory with seamless glass walls, a sterilization centre, waiting areas, and staff and doctor offices. Rosati managed every stage of the project, from design and architecture to coordinating trades and ensuring the build met strict medical standards with professionalism and attention to detail.

"Rosati finished on time, coordinated everything really well, and even recommended great people for interior design and furniture. Every time you call Rosati, you get them on the phone and they're there to handle it."

■ Dr. Cameron Walker, Co-Owner, Central OMS



South Windsor's New Neighbourhood Butcher & Bakery Is Now Open & Ready To Meat You

The Butcher's Dozen is now open at 3850 Dougall Avenue bringing South Windsor a new destination for premium meats and fresh baked goods. Owners Jared and Shaylynn Niziolek have crafted a warm, modern shop that highlights quality, comfort, and community. Inside, customers will find a showcase of top-grade cuts, homemade prepared items, an irresistible lineup of baked favourites, and specialty coffees by Cherry Waves.



Rosati delivered a full interior transformation of the 1,850-square-foot shop, managing everything from planning and layout to framing, tiling, and final finishes. The Butcher's Dozen offers Prime and AAA steaks, Australian and Japanese Wagyu, classic cuts, sausages, rotisserie chicken, frozen seafood, and handcrafted desserts. Whether grabbing dinner or ordering a premium cut, the shop is ready to serve the community with exceptional quality.

"It shaped up beautifully. They made every step of the process easy with no headaches at all. Rosati was incredibly quick to get things done, and their design-build approach made the entire project seamless. Their team handled everything under one roof, stayed flexible & was always open to our ideas. It really felt like a true partnership from start to finish."

■ Jared Niziolek, Co-Owner

